

# xVision Converter

## HDMI to Fiber

XVVHDMI2FIBER



● Fiber ——— (A) starting point



Professional equipment in mission-critical applications is all about reliability and confidence. So we started with a clean sheet, and built what might soon become your most trustworthy piece of equipment.

Introducing the world's first video converters truly designed for the road. Video converters nowadays are used everywhere on professional

A/V events, presentations, live shows and tours and often have a critical role. Yet, they are often the weakest link in the signal chain. Low quality connectors, weak enclosure, external consumer-grade power supply, and overall barebones design that all contribute to a generally unreliable piece of equipment. We wanted to change that, so we designed the xVision Video Converters.

### Features

- › **Integrated power supply** with locking PowerCON Connector. Never rely on a cluster of wall-warts again.
- › **Built-in convenience AC** outlet to power nearby projector, TV, laptop, small video projector... Power bar to power both the converter and device not required anymore.
- › **Magnetic stacking system** and non-skid rubber pad for table top application. Saves at least 10 gaffer tape rolls a year.
- › **Multiple mounting options** : C-Clamp, wall-mount adapter, LCD mount adapter and belt adaptor.
- › **Rugged, Tour-ready and aesthetic enclosure** : The sexiest widget in your tool box, that will keep looking good for years to come.
- › **Plug-n-play operation** ; No dials, switches, buttons or menus to fumble with : It just works.
- › Clear and ample status **LED indicators** for quick troubleshooting.
- › **Easy on-the-field identification** with unique color and alphabetic coding system.
- › **Locking HDMI port** prevents accidental disconnection.
- › **Relocked and amplified SDI** loop thru
- › Proudly designed and assembled **in Canada**.

### Ordering Information

XVVFIBER2HDMI-**1**..... xVision Converter HDMI to Fiber

Single Mode: **S** ——— **1**: OpticalCon DUO  
 Multimode: **M** ——— **2**: OpticalCON QUAD

XVV-CC1-B..... xVision Carrying case for 1 unit

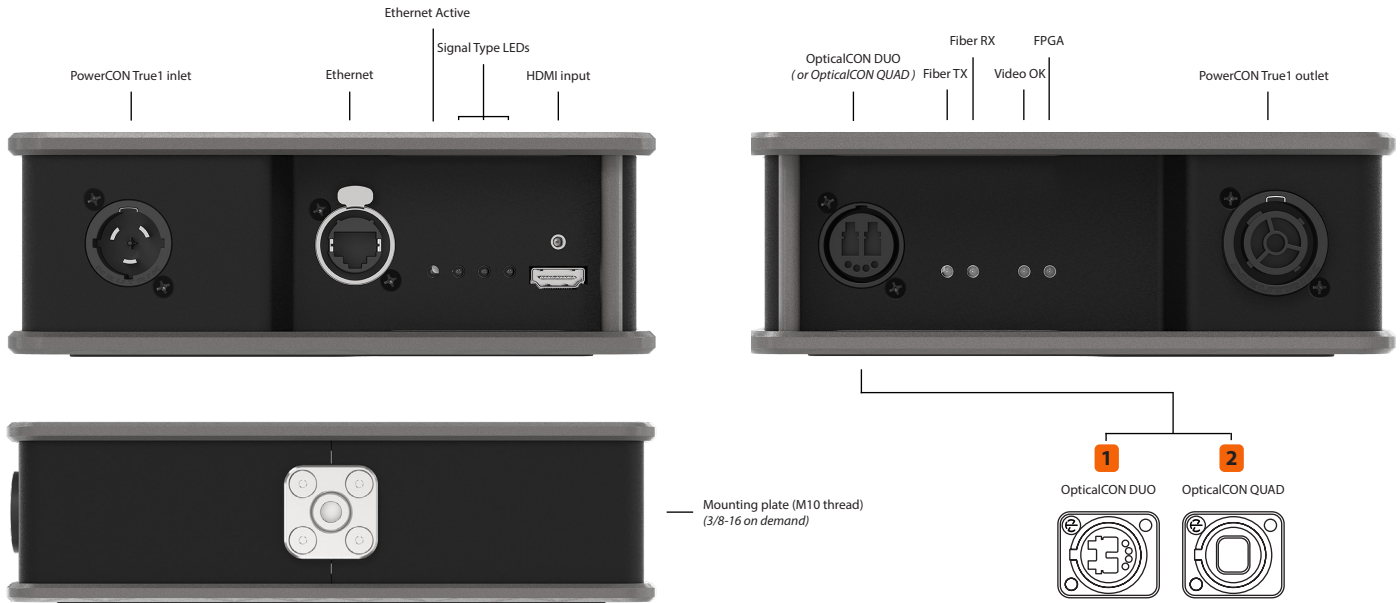
XVV-CC2-B..... xVision Carrying case for 2 units

XVV-VM-B..... xVision Converter Vertical Mount B

MSCB-CS..... Mega Slim coupler - black with countersunk

# Specifications

## Overview



## Connections

Video Input	1 x HDMI 2.0 type A with locking system
Ethernet Port	1 x Gpbs Ethernet on Neutrik EtherCON
Video Output	1 x 10 Gbps Optical Ethernet, SFP-based Choice of Singlemode or Multimode Choice of Neutrik OpticalCON DUO or QUAD (see ordering information)

## Supported Signals

HDMI 2.0 Output	All HDMI 2.0 formats including: 4K/60 8-bit 4:4:4, 4K/60 10-bit 4:2:2, High dynamic range (HDR10 & Dolby Vision)
Embedded Audio	Up to 8 channels, 24 bit, 192kHz
Encoding Technology	SDVoE (NT1000-based)
Typical Latency	< 0.1 ms
Auxiliary Signals	1Gpbs Ethernet pass-thru

## Physical Specifications

Height	62 mm (2.44 in)
Depth	180 mm (7.08 in)
Width	221 mm (8.7 in)
Weight	2 kg (4.4 lbs)
Alternate Form Factor	Also available in Reversible Module

## Environmental Specifications

Operating Humidity	0% to 90% non-condensing
Operating Temperature	0-40 °C

## Power requirements

Power Supply	Built-in power supply PowerCON True1 input PowerCON True1 output (loop-thru)
Power Consumption	45W max.
Voltage Range	100-240V, 50-60Hz
Courtesy Outlet	Max 10A, same voltage as input

## In the Box

xVision Converter HDMI to Fiber  
AC Mains to PowerCON True1 cable (1.5m, specify plug type at ordering)

## Certifications & Compliance

This device complies with the following international standards



# xVision Converter

## Fiber to HDMI

XVVFIBER2HDMI



● Fiber ——— (B) destination point



Professional equipment in mission-critical applications is all about reliability and confidence. So we started with a clean sheet, and built what might soon become your most trustworthy piece of equipment.

Introducing the world's first video converters truly designed for the road. Video converters nowadays are used everywhere on professional

A/V events, presentations, live shows and tours and often have a critical role. Yet, they are often the weakest link in the signal chain. Low quality connectors, weak enclosure, external consumer-grade power supply, and overall barebones design that all contribute to a generally unreliable piece of equipment. We wanted to change that, so we designed the xVision Video Converters.

### Features

- › **Integrated power supply** with locking PowerCON Connector. Never rely on a cluster of wall-warts again.
- › **Built-in convenience AC** outlet to power nearby projector, TV, laptop, small video projector... Power bar to power both the converter and device not required anymore.
- › **Magnetic stacking system** and non-skid rubber pad for table top application. Saves at least 10 gaffer tape rolls a year.
- › **Multiple mounting options** : C-Clamp, wall-mount adapter, LCD mount adapter and belt adaptor.
- › **Rugged, Tour-ready and aesthetic enclosure** : The sexiest widget in your tool box, that will keep looking good for years to come.
- › **Plug-n-play operation** ; No dipswitches, buttons or menus to fumble with : It just works.
- › Clear and ample status **LED indicators** for quick troubleshooting.
- › **Easy on-the-field identification** with unique color and alphabetic coding system.
- › **Locking HDMI port** prevents accidental disconnection.
- › **Relocked and amplified SDI** loop thru
- › Proudly designed and assembled **in Canada**.

### Ordering Information

XVVFIBER2HDMI (1) ..... xVision Converter Fiber to HDMI

Single Mode: **S** ——— **1** : OpticalCON DUO  
 Multimode: **M** ——— **2** : OpticalCON QUAD

XVV-CC1-B..... xVision Carrying case for 1 unit

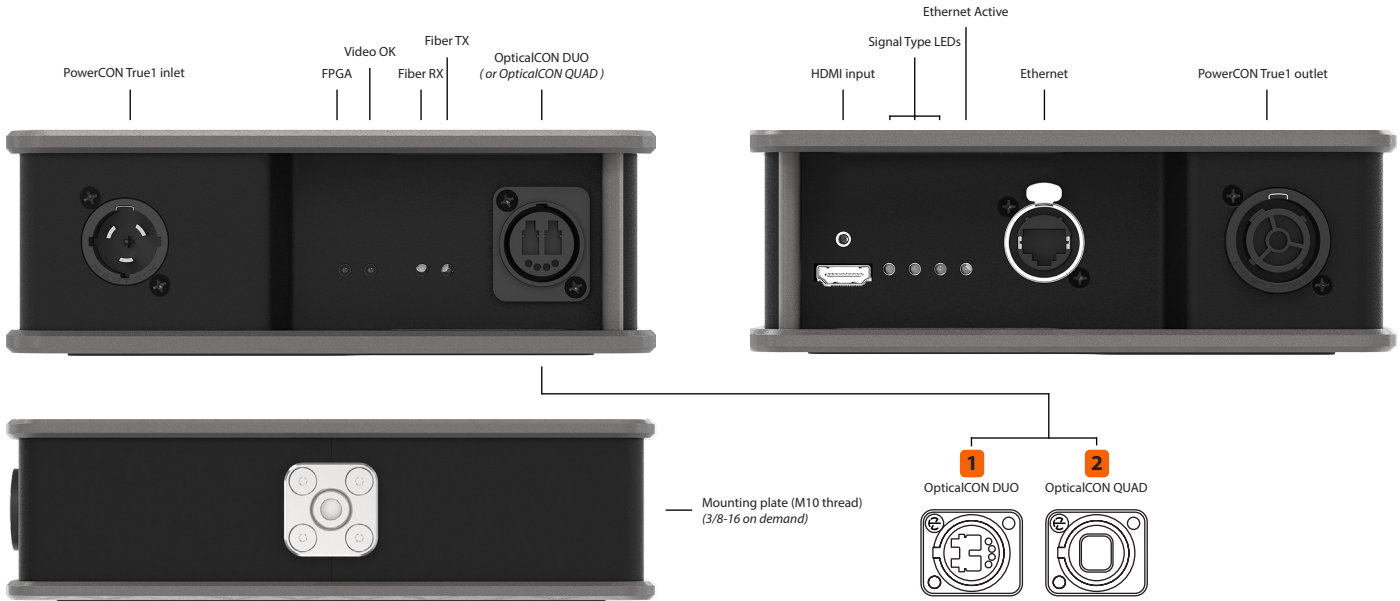
XVV-CC2-B..... xVision Carrying case for 2 units

XVV-VM-B..... xVision Converter Vertical Mount B

MSCB-CS..... Mega Slim coupler - black with countersunk

# Specifications

## Overview



## Connections

<b>Video Input</b>	1 x 10 Gbps Optical Ethernet, SFP-based Choice of Singlemode or Multimode Choice of Neutrik, OpticalCON DUO or QUAD (see ordering information)
<b>Ethernet Port</b>	1 x 1 Gbps Ethernet on Neutrik EtherCON
<b>Video Output</b>	1 x HDMI 2.0 type A with locking system

## Supported Signals

<b>HDMI 2.0 Output</b>	All HDMI 2.0 formats including: 4K/60 8-bit 4:4:4, 4K/60 10-bit 4:2:2, High dynamic range (HDR10 & Dolby Vision)
<b>Embedded Audio</b>	Up to 8 channels, 24 bit, 192kHz
<b>Encoding Technology</b>	SDVoE (NT1000-based)
<b>Typical Latency</b>	< 0.1 ms
<b>Auxiliary Signals</b>	1Gbps Ethernet pass-thru

## Physical Specifications

<b>Height</b>	62 mm (2.44 in)
<b>Depth</b>	180 mm (7.08 in)
<b>Width</b>	221 mm (8.7 in)
<b>Weight</b>	2 kg (4.4 lbs)
<b>Alternate Form Factor</b>	Also available in Reversible Module

## Environmental Specifications

<b>Operating Humidity</b>	0% to 90% non-condensing
<b>Operating Temperature</b>	0-40 °C

## Power Requirements

<b>Power Supply</b>	Built-in power supply PowerCON True1 input PowerCON True1 output (loop-thru)
<b>Power Consumption</b>	45W max.
<b>Voltage Range</b>	100-240V, 50-60Hz
<b>Courtesy Outlet</b>	Max 10A, same voltage as input

## In the Box

xVision Converter Fiber to HDMI  
AC Mains to PowerCON True1 cable (1.5m, specify plug type at ordering)

## Certifications & Compliance

This device complies with the following international standards

