



# HYPERION

## TUBE

### DATASHEET



## Optical

### Colours

Customized RGB-Mint-Amber

### Total LED power

144W

### Max. power draw

92W

### Emittance (at 1m)

1570Lx

### TLCI

≥96

### CRI

≥96

### Beam Angle

180°

### Pixels

32

## Electrical

### Battery

LG Chem Lithium-ion

### Battery Lifetime

70% after 300 cycles

### Battery Runtime

Up to 20 hours

### LED Lifetime

50.000 Hours

### Charging time (nominal)

3 Hours

### Input Voltage (Charger)

90-264V 47-63Hz

### Input Voltage (Light)

24V, 4A

## Control

### Backside display

With HSI control

### Wireless Modules

865-870MHz | 902-928MHz |

2.4GHz

### Range

300m | 330 Yards

### DMX

Wired DMX + Wireless (CRMX  
& W-DMX)

## Construction

### Housing

Polycarbonate, metal end caps

### IP Rating

IP65

### Relative humidity

0-100%

### Operating Temperature

0-40 °C

32-104 °F

### Weight

2.90kg

6.39Lbs

### Dimensions

Ø42 x 2031 mm

Ø1.6" x H66.43"

## Accessories



### Charger

FP3-CHR



### Eyebolt

AX1-EBLT (2 pieces Included)



### Holder

AX1-H (2 pieces included)



### BabyPin (3/8" & 1/4"-20 threads)

AX1-BLT



### WingPlate

AX1-WP (Does not include holders)



### CrossPlate

AX1-CP



### Connection cable

FP1-PWB-CAB



### Extension Cable

FP1-EXC



### DataLink

FP1-DTL



# DATASHEET

# Power Supply for Hyperion Tube

Compatible with:  
FP3 Hyperion Tube, FP1 Titan Tube, FP2 Helios Tube

Date: 01/28/21 Version: 1.0

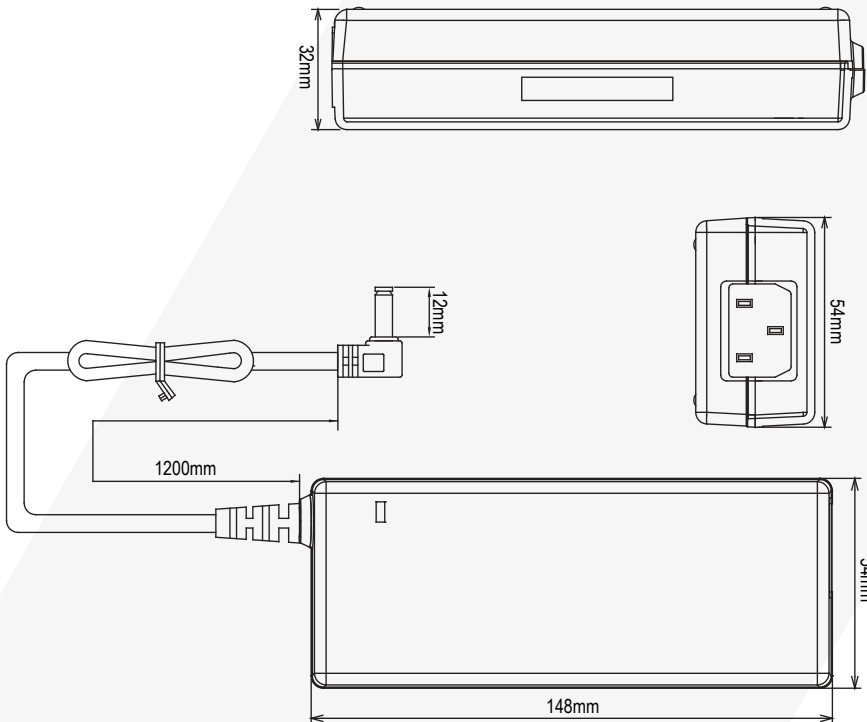


Unit to charge one Hyperion Tube  
(or Titan/Helios Tube)

## SPECIFICATIONS

Order Code EU	FP3-CHR-EU
Order Code US	FP3-CHR-US
Order Code UK	FP3-CHR-UK
Order Code AU	FP3-CHR-AU
Input Voltage	100-240 VAC
Output Voltage	24VDC - 4A
Output Current	96W
Cable length AC end	1200mm / 47inch
Cable length DC end	1500mm / 59inch

## DRAWING





# DATASHEET

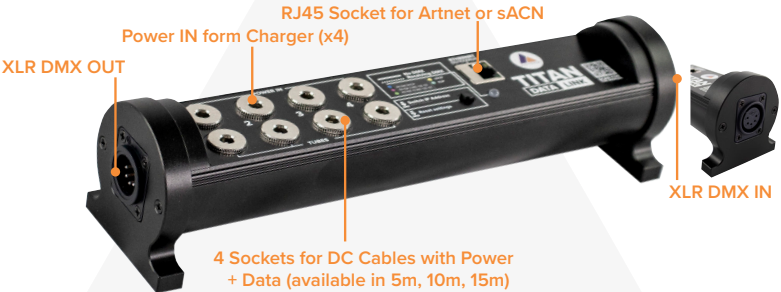
# DATA|LINK

Compatible with:  
FP3 Hyperion Tube, FP1 Titan Tube, FP2 Helios Tube

Date: 01/28/21 Version: 1.0



Required device to send wired DMX to Hyperion Tube. Also useful for Titan Tube and Helios Tube if no Titan PowerBox is available or to work with multiple universes on one PowerBox\*\*

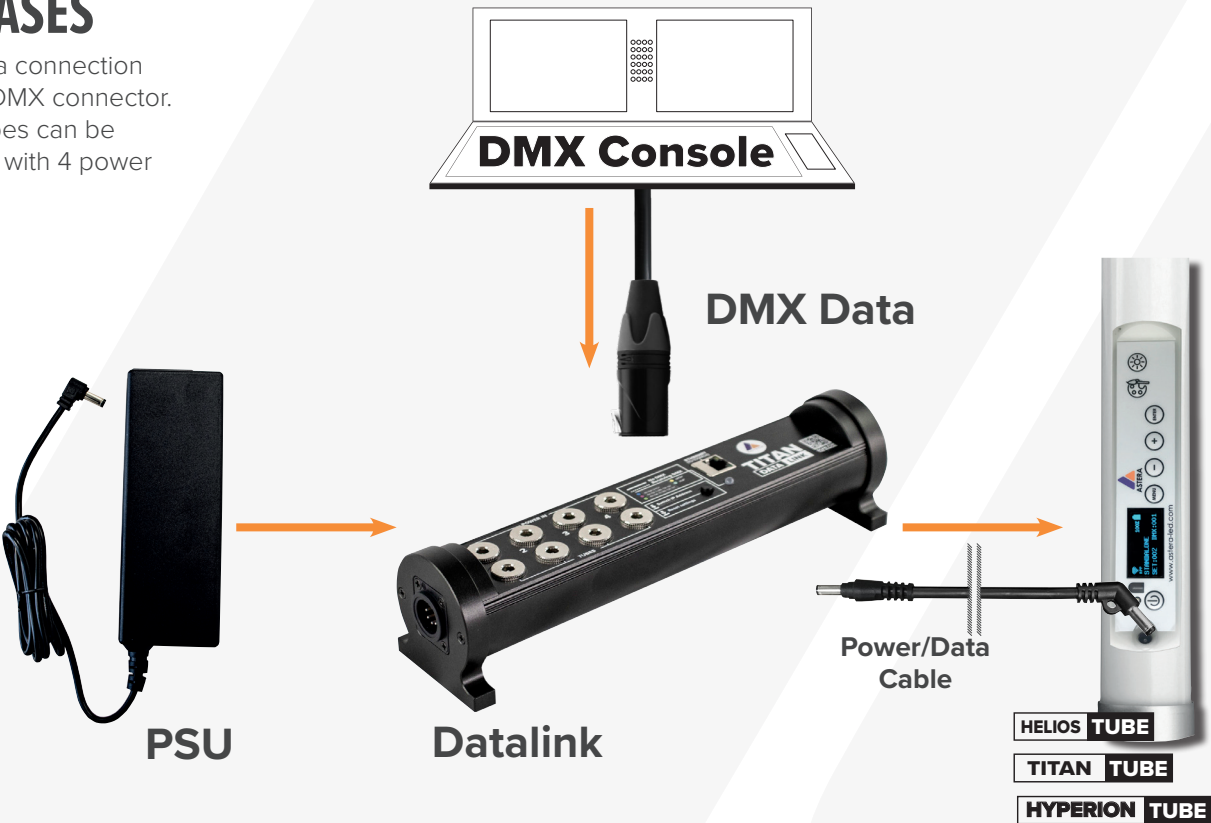


## SPECIFICATIONS

Order Code	FP1-DTL
Input	4 x 24VDC, Max 4A
Output	4 x 24VDC
	Power pass through to the four outputs
Connectors	8 x DC
Data Input	XLR-DMX; ART-Net (1 Universe); sACN (1 Universe) IP Address can be selected between 2.x, 10.x and DHCP. Universe ID can be set by web-interface or pushbutton (by button only 1-16).
Data Output	DMX via DC sockets
IP Rating	IP20
Dimensions (mm/inch)	267 x 69 x 64 / 10.5 x 2.7 x 2.5
Weight (kg/lbs)	0.5 / 1.1
Material	Aluminium

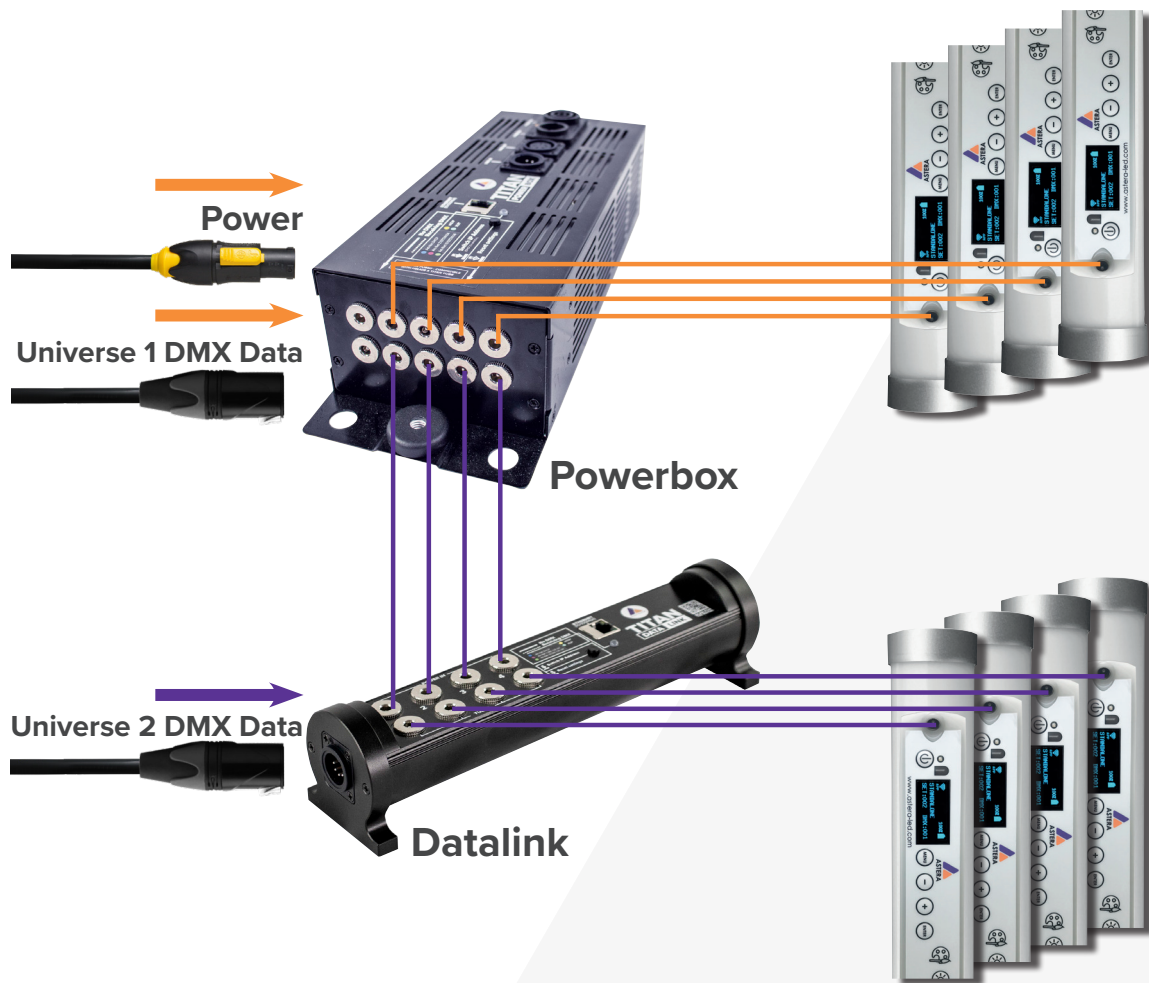
## USE CASES

Power/Data connection with PSU. DMX connector. Up to 4 tubes can be connected with 4 power supplies.

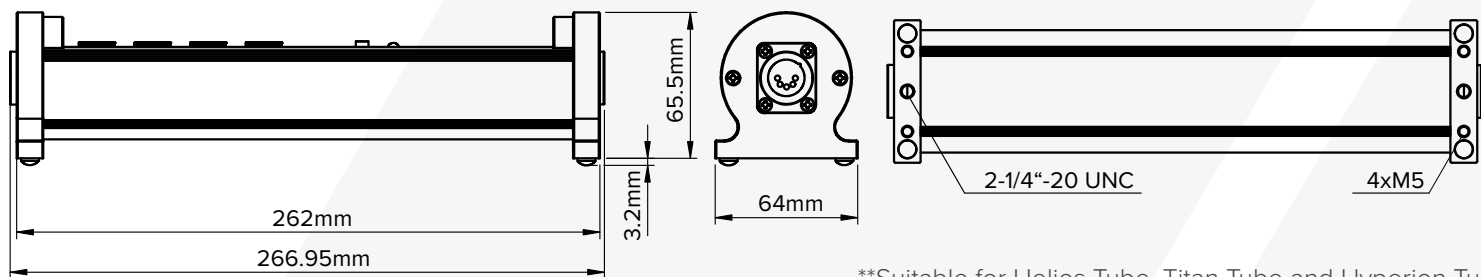


\*\*Suitable for Helios Tube, Titan Tube and Hyperion Tube

# Connecting multiple DMX universes to 1 Powerbox



## DRAWINGS



\*\*Suitable for Helios Tube, Titan Tube and Hyperion Tube



# DATASHEET

## M5 EyeBolt

Compatible with:  
AX1 Pixel Tube, FP1 Titan Tube,  
FP2 Helios Tube, FP3 Hyperion Tube

Date: 01/28/21 Version: 1.0

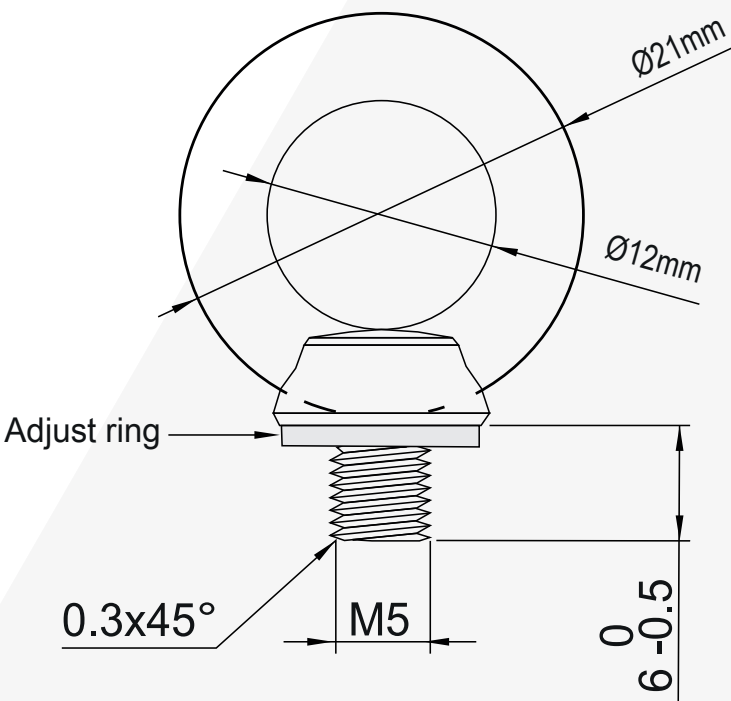


For suspending AX1 Pixel Tube, Helios Tube, Titan Tube, Hyperion Tube and for securing the 4 tubes via a safety wire.

### SPECIFICATIONS

Order Code	FP1-EBLT
Inner diameter (mm/inch)	Ø12 / Ø0.47
Outer diameter (mm/inch)	Ø21 / Ø0.83
Thread	M5
Weight (kg/lbs)	0.011 / 0.024
Material	Stainless Steel / Adjust ring (rubber)

### DRAWINGS



### USE CASES

Eyebolt for hanging  
/ safety via Holder





# DATASHEET

# TubeHolder

Compatible with:  
AX1 Pixel Tube, FP1 Titan Tube,  
FP2 Helios Tube, FP3 Hyperion Tube

Date: 01/28/21 Version: 1.0



Essential grip for mounting Astera tubes to walls, truss and other structures.

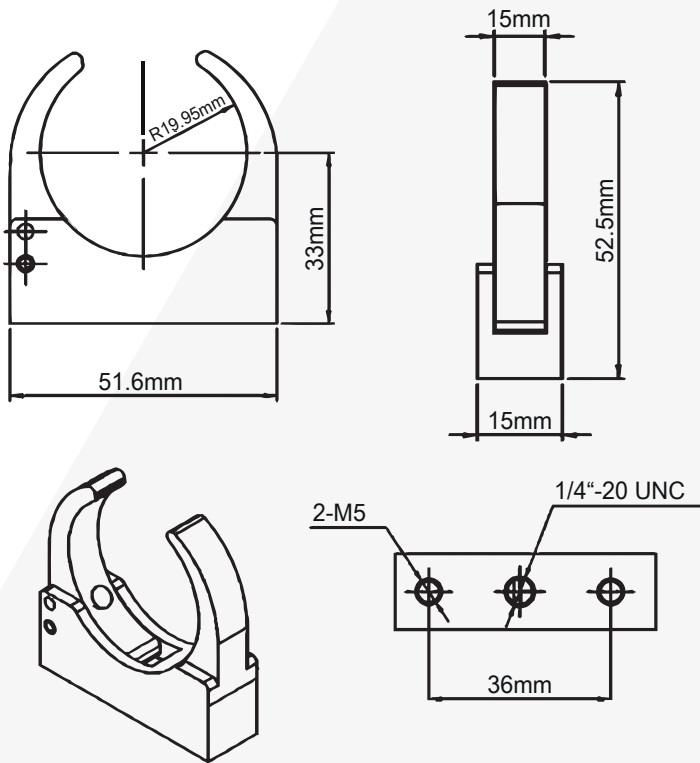
### Holder on Tube



## SPECIFICATIONS

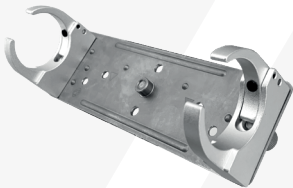
Order Code Holder	AX1-H
Order Code Holder Rubber	AX1-H-R
Dimensions (mm/inch)	51.6 x 52.5 x 15 / 2.03 x 2.06 x 0.6
Thread	M5
Weight (kg/lbs)	0.045 / 0.09
Material	Stainless Steel

## DRAWINGS



## USE CASES

### Holder on WingPlate



### Tube mounted on truss with Holder and SuperClamp

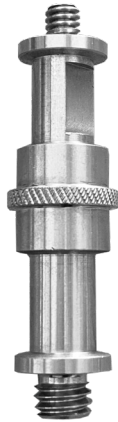


### Holder for hanging / safety





Compatible with:  
AX3 bracket, AX3 housing (sides), AX1/  
Tube Holder, AX1/Tube WingPlate and others

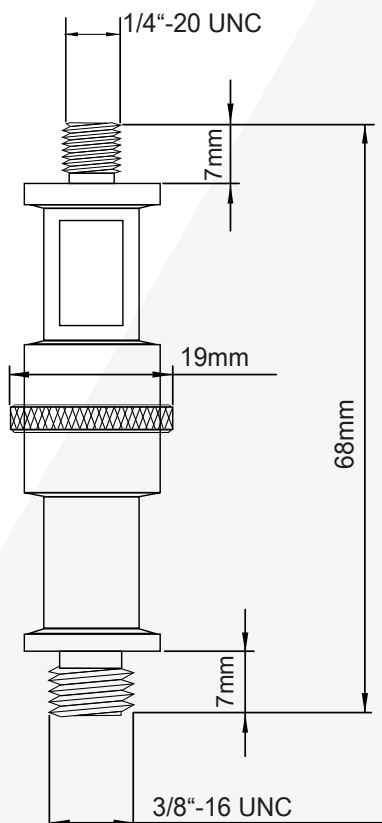


Double ended Spigot - essential grip for mounting  
Astera tubes and spotlights to walls, truss and other  
structures.

## SPECIFICATIONS

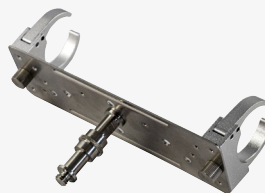
Order Code	AX1-BLT
Upper thread	1/4"-20
Lower thread	3/8"-16
Dimensions (mm/inch)	Ø19 x 68 / Ø0.75 x 1.3
Weight (kg/lbs)	0.06 / 0.13
Material	Stainless Steel

## DRAWINGS

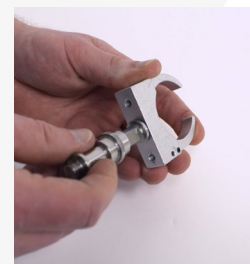


## USE CASES

Mount WingPlate



Mount Holder





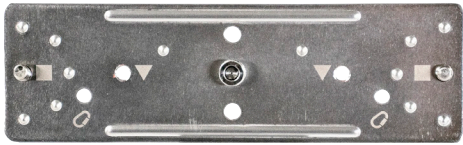


# DATASHEET

# WING|PLATE

Compatible with:  
Holder + AX1 Pixel Tube, FP1 Titan Tube,  
FP2 Helios Tube, FP3 Hyperion Tube

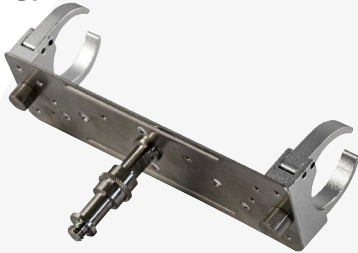
Date: 01/28/21 Version: 1.0



A mounting holder for 2 AX1 holders (AX1-H) with backside 1/4"-20 thread for AX1 double-ended spigot (AX1-BLT). Can be used to hang or mount tubes and create shapes such as triangles and squares out of multiple tubes.

Note: The WingPlate needs 2 x holders (AX1-H) that are supplied separately

### Wingplate with Holders & BabyPin



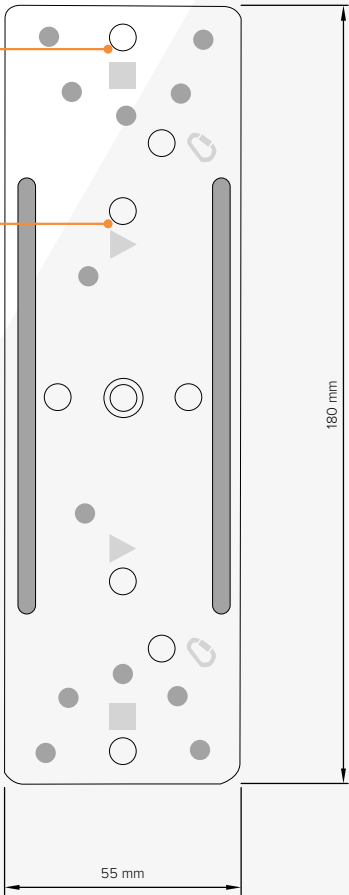
## SPECIFICATIONS

Order Code	AX1-WP
Dimensions (mm/inch)	180 x 55 x 19 / 7.1 x 2.2 x 0.7
Center thread	1/4" - 20UNC
Screws for Holders	2
Weight (kg/lbs)	0.13 / 0.29
Material	Aluminium

## DRAWINGS

Fix Holder to this hole  
to create squares

Fix Holder to this hole  
to create triangles



## USE CASES

